

JABRA BIZ SERIES

THE POWER OF CONVERSATION

The Jabra BIZ Series is perfect for call center agents, civil servants, contact center agents, HR support and IT support. They deal with a high amount of calls so all day comfort is important. In their busy environments, noise cancellation makes sure all background noise is kept to a minimum.

SAY HELLO TO OUR CORDED HEADSETS

Make your team more efficient with a call solution from Jabra.

JABRA BIZ 1500

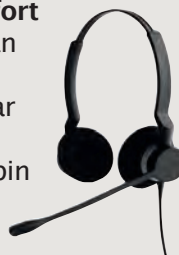
- **Quality sound**
Noise canceling microphone for truly professional sound
- **Easy to control**
Durable build with volume control unit and mute for USB version
- **All day comfort**
Foam cushions and 270° flexible spin boom arm



Professional, durable and comfortable

JABRA BIZ 2300

- **Crystal clear sound**
Breath resistant microphone with noise cancellation
- **Advanced build**
Durable Kevlar®-reinforced cord and programmable buttons for USB variant
- **Superior comfort**
20% lighter than competitors with padded ear cushions and 360° flexible spin boom arm



All day wearing comfort

JABRA BIZ 2400 II

- **World-class sound**
Breath resistant microphone with ultra noise-cancellation
- **Best in class build quality**
Kevlar®-reinforced cord and hygienic snap on/off headband padding
- **Ultimate comfort**
40% lighter than competitors, soft pouch leatherette ear cushions, headphone padding and 360° flexible spin boom arm



All-round quality and lightest in its class

Works:



AT OFFICE DESK

Works with:



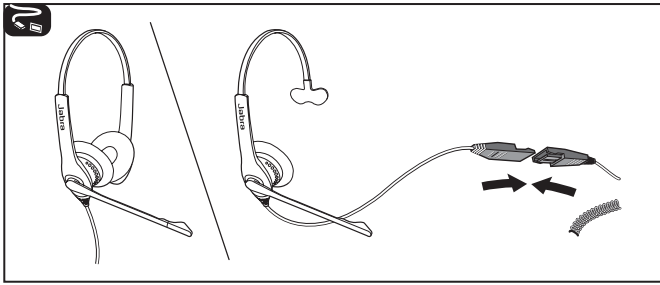
DESK PHONE, SOFTPHONE



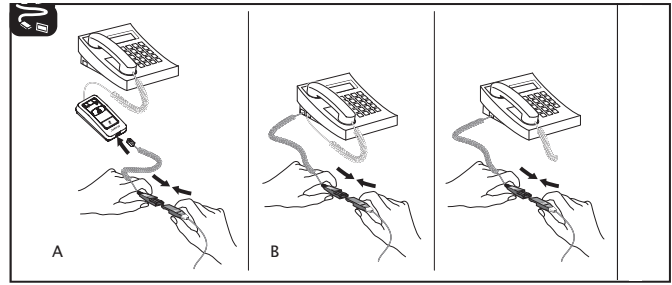
Discover more at jabra.com/biz

JABRA BIZ SERIES QD QUICK START GUIDE

1. Connection



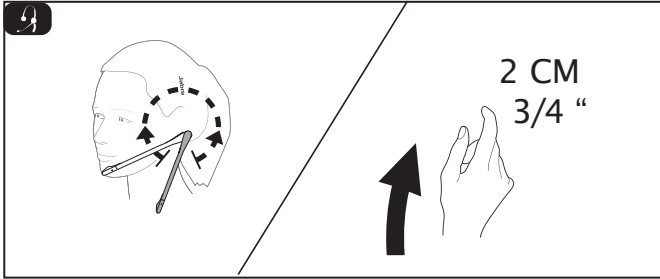
Duo or Mono available with QD connectivity (USB available).



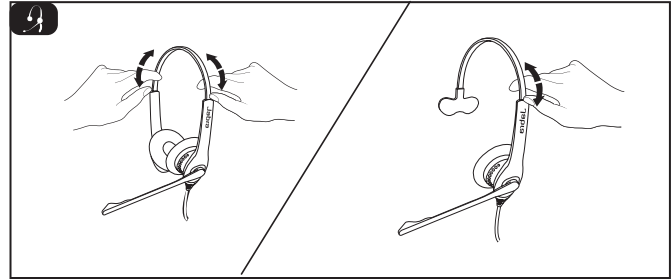
QD connectivity.

C

2. Usage



Jabra BIZ 2300 and Jabra 2400 II have 360° spin boom arms, Jabra BIZ 1500 has a 270° spin boom arm so it can be easily adjusted without breaking.



Duo or Mono available adjustable headband.

DECISION TIME: FEATURE OVERVIEW



Jabra BIZ 2400 II



Jabra BIZ 2300



Jabra BIZ 1500

Work Space	<input type="checkbox"/> At office desk	.	.	.
	<input type="checkbox"/> Desk phone*	.	.	.
Connectivity	<input type="checkbox"/> Softphone	.	.	.
	<input type="checkbox"/> Breath resistant mic	.	.	.
Sound	<input type="checkbox"/> QD - Wideband up to 4.5khz	.	.	.
	<input type="checkbox"/> QD - Wideband up to 6.8khz	.	.	.
	<input type="checkbox"/> USB - Wideband up to 6.8khz	.	.	.
Comfort/ Wearing Style	<input type="checkbox"/> Ear cushions	<i>Leatherette</i>	<i>Foam</i>	<i>Foam</i>
	<input type="checkbox"/> Flexible spin boom arm	360°	360°	270°
	<input type="checkbox"/> Headband padding	.	.	.
	<input type="checkbox"/> Headband	.	.	.
	<input type="checkbox"/> Earhook (Mono only)	.	.	.
	<input type="checkbox"/> Neckband (Mono only)	.	.	.
	<input type="checkbox"/> Mono/Duo	.	.	.
Cable	<input type="checkbox"/> Corded	.	.	.

*All QD headsets require a connection cable (Jabra LINK 180, LINK 220 or Jabra LINK 280)